



Fan Guide

MEN'S EHF EURO 2016 POLAND

Gdansk

HOST CITY	 GDAŃSK	 MEN'S EHF EURO 2016 POLAND
-----------	--	--



MEN'S EHF
EURO 2016
POLAND

Dear Fan - Welcome to Gdansk at the Men's European Handball Championship Poland 2016! Months of waiting have finally come to an end. Starting from 15 January, there are more than two weeks of thrilling struggle of the best handball players on the Old Continent ahead of you. We guarantee joy, emotions, unexpected twists and dramatic ends in four halls of the MEN'S EHF EURO 2016 POLAND tournament. You'll feel the emotions! Sixteen best teams in Europe will play their matches in Krakow, Wroclaw, Gdansk and Katowice. Ahead of us a total sum of over 2,000 minutes of fight on the court and hundreds of goals that will be scored in 48 games. The most important one, appointing the European champion, will be held on 31 January in Krakow. The title will be defended by the national team of France, that two years ago defeated Denmark in the final.

In your hands we put a guide that will carry you through the EHF EURO 2016. You will learn, among others, how to get to the hall, what time the matches start and which subjects are not allowed to bring them with to the venues.

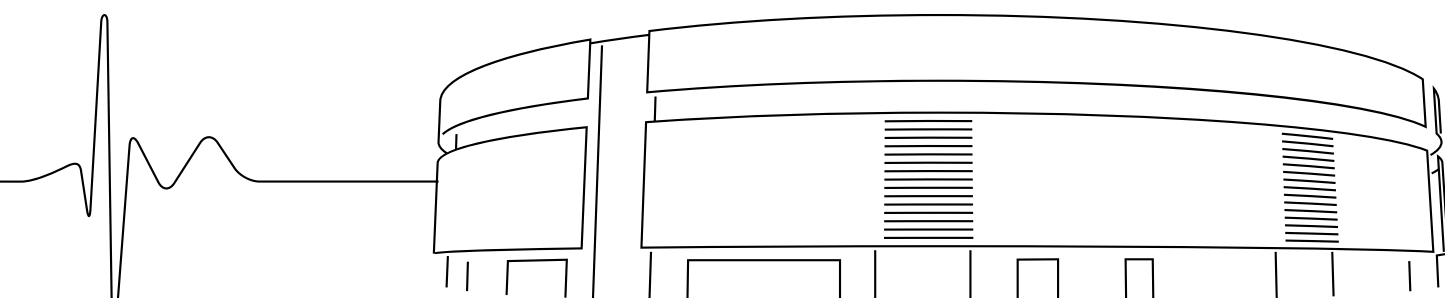


Table of Contents:

I. Information about the competition in the ERGO ARENA

II. Useful information

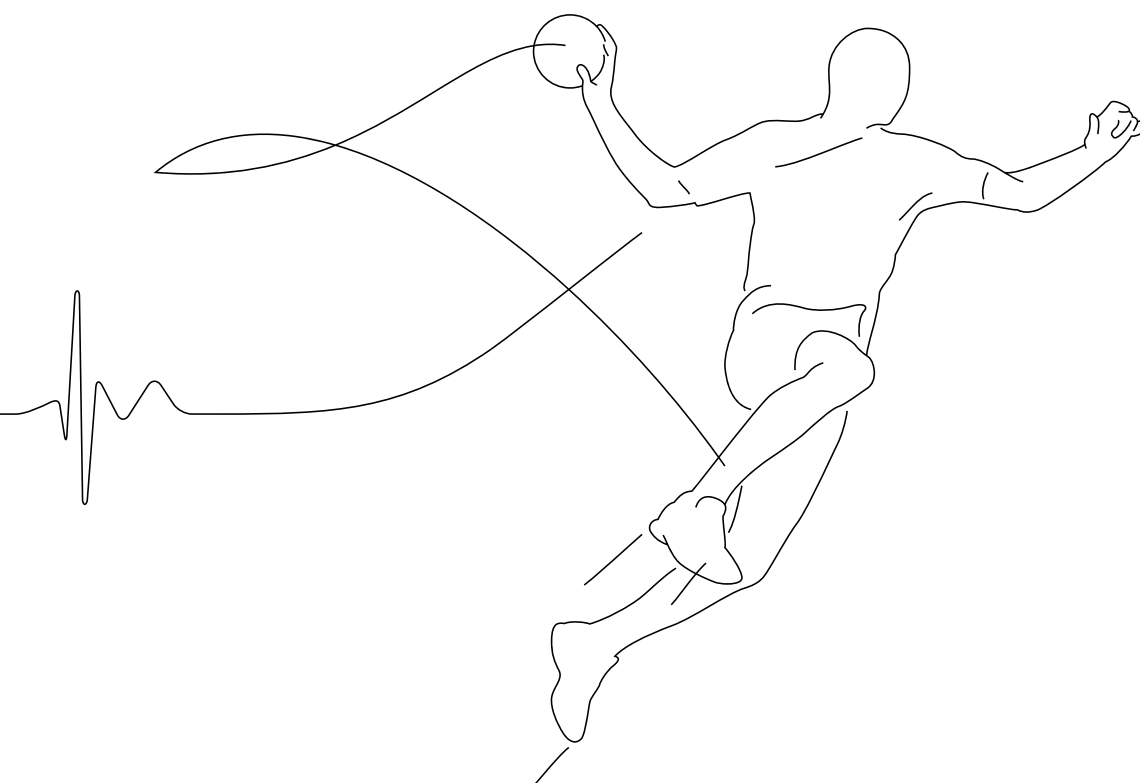
III. How to get to the hall

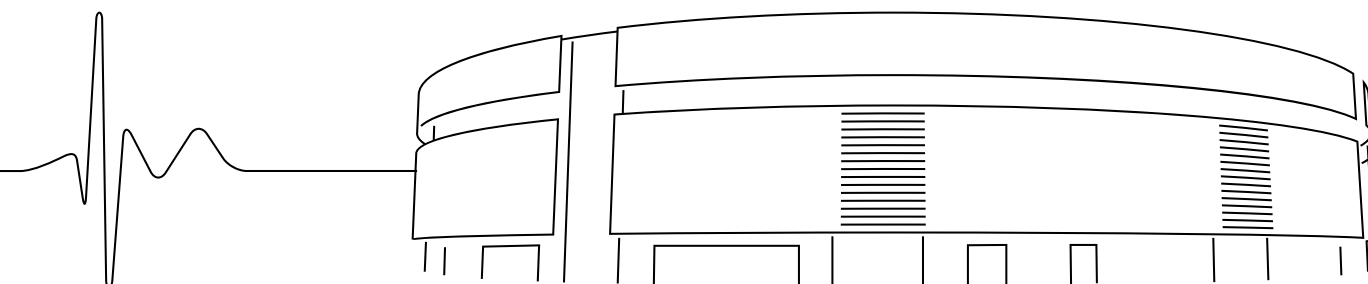
IV. PGNiG Retail Trade - Official EHF EURO 2016 Fan Zone

V. Security

VI. Information for tourists

VII. Glossary English - Polish





I. ERGO ARENA

On the border of two cities: Gdansk and Sopot, in the very centre of the Tricity, teams of the Group D play their matches.

In Gdansk each match of the European Championship can be watched by 11 000 fans. ERGO ARENA is a multifunctional facility, suitable for hosting events of the highest rank in many sports disciplines. So far, the hall has hosted, among others, the Volleyball World League and the Volleyball World Cup 2014, as well as matches of the Poland's handball and basketball national teams.

GROUP D

1. Denmark
2. Hungary
3. Russia
4. Montenegro

SCHEDULE

Preliminary Round

- 16.01.2016 hours. 18.00 Hungary - Montenegro
- 16.01.2016 hours. 20.15 Denmark - Russia
- 18.01.2016 hours. 18.00 Russia - Hungary
- 18.01.2016 hours. 20.15 Montenegro - Denmark
- 20.01.2016 hours. 17.15 Russia - Montenegro
- 20.01.2016 hours. 20.00 Denmark - Hungary



The Opening Ceremony of the European Championship will be held on 16 January immediately after the match Hungary – Montenegro around 19.50 hours.

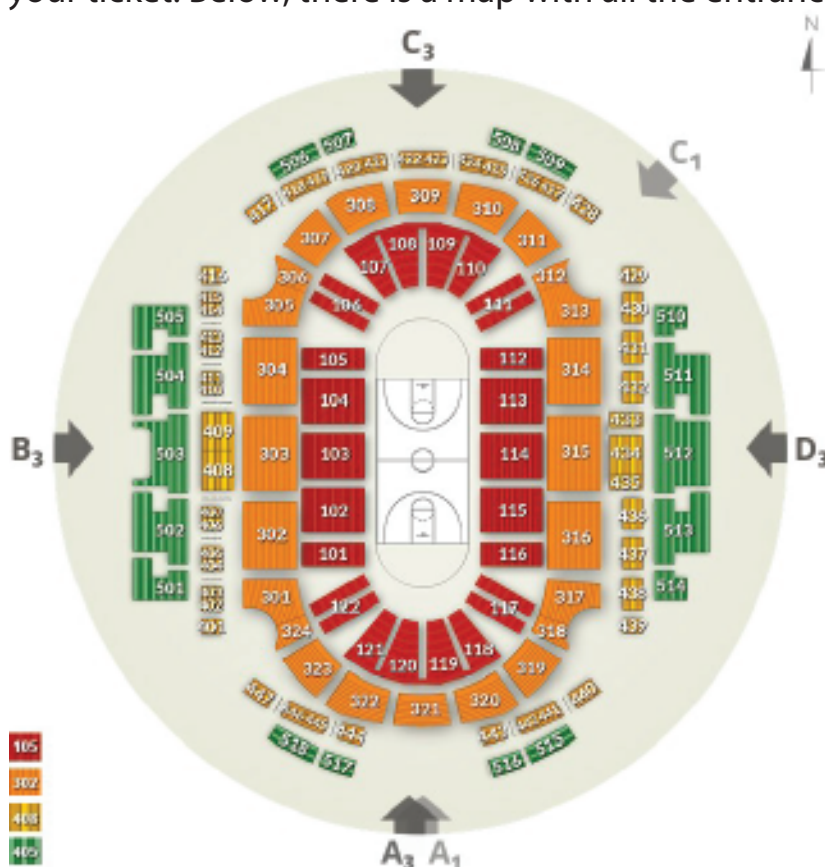
II. Useful information, in other words: what you need to know about a match day

What time can I enter the hall?

Every game is a big operation. Also logistics one. For the sake of comfort of all fans the organizer recommends to come to each game in advance. It will enable you to find your place without unnecessary nerves. Each match day the gates will be opened 90 minutes before the first game.

Which way can I enter the hall?

You will get into the hall through three gates: A1, B3 and D3. However, to maximally expedite entering the hall, we suggest to use the entrance that is the closest one to the sector marked on your ticket. Below, there is a map with all the entrances and sectors in ERGO ARENA.



Can I leave the hall during the game or between the matches and then return to it?

No. Each ticket entitles you to a single entrance only. After leaving the ERGO ARENA, return is possible only with a new ticket.

Tickets

Entering the hall is possible only after demonstrating a valid ticket for the match. Each fan should have an identity document with - an identity card, passport, driving license, student ID, school ID, etc.. The first inspection is carried out at the entrance to the hall. Another ones can be done several times already in the middle of ERGO ARENA. The right to verify the ticket and an identity document belongs to information and security services, as well as other persons authorized by the organizer. Refusal to cooperate may cause an expulsion of fan from the arena. Keep your ticket in a safe place. Lost or stolen tickets will not be issued again.



Tickets to each of the halls are in different colours: Krakow - red, Wroclaw - green, Katowice - violet, Gdansk - blue.

Where can I buy tickets?

Tickets for all matches can be booked via the official website of the European Handball Federation www.pol2016.ehf-euro.com and via eBilet.pl website, which is the EHF EURO 2016 Official Ticket Partner. In case of any questions, please, contact (22) 122 80 10 or ehfeuro2016@ebilet.pl. The tickets for the MEN'S EHF EURO 2016 POLAND are available also in the Empik stores all over Poland.

Can I buy a ticket on the day of the match?

Tickets on the day of the match (if still available) can be purchased only through the official channels of distribution as described above. Tickets sale is not conducted in any of the halls hosting matches of the European Championship.

Will the tickets be valid only for single matches or the entire match days?

The tickets will be valid for the entire match days (daytime tickets). They allow their owners to watch all matches taking place in one hall during the day.

Is it possible to return tickets bought?

No, the tickets can not be returned.

Can I give or sell my ticket to anyone?

It is not possible to resell tickets. The organizer of the EHF EURO 2016 shall not be liable for any purchase of the tickets through third parties without rights to sell and distribute tickets.

We also remind you that in accordance with Article 133 § 1 of the Code of Offences the tickets sale at a profit, or purchasing them with the intention of resale at a profit, is an offense.

The Polish Handball Federation hereby declares that the sale of tickets was conducted only through the entities authorized by the federation to sale and distribute the tickets, mainly through the website <https://www.ebilet.pl>.

Disabled people

ERGO ARENA is fully adapted to the needs of people with disabilities. The venue has an entrance for disabled people from the gate number B3. At the Łokietka Streets there are 20 parking places for the disabled.



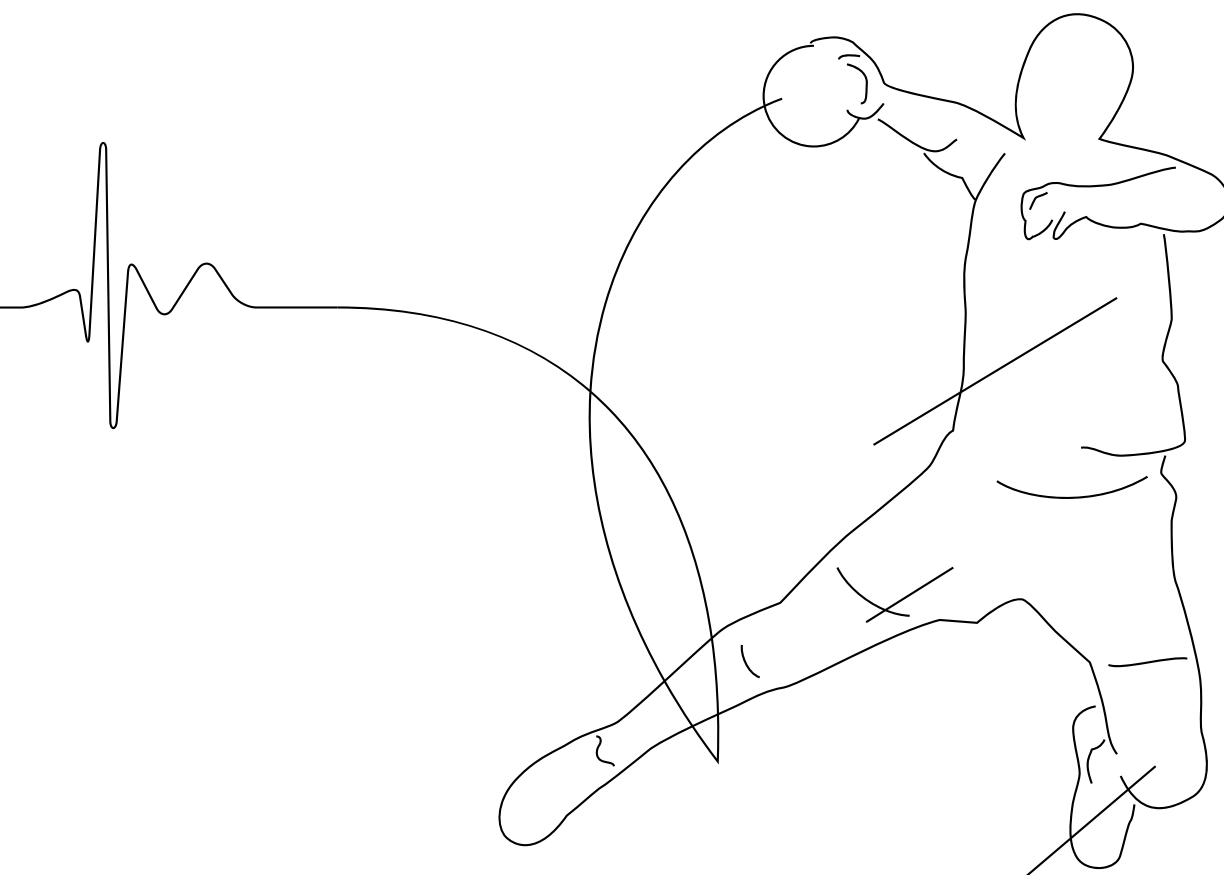
Do children enter for free?

Children under 3 years old have a free entry based on the document with proof of age. During the event children must seat on their guardian's knees. Children must not be left unaccompanied. The Organizer does not recommend bringing over the children up to 3 years old due to the increased noise which may be uncomfortable for the children. Minors under 13 years old can enter the hall only with a valid ticket and under the supervision of an adult.

Who is eligible for a discount?

There is special category of saver family ticket called Big Family Card (Karta Dużej Rodziny) available for each match day. The tickets allow their owners to book purpose-assigned seats in the Category 2 areas at a lower price of the Category 4. You can send your request for the Big Family Card to: kartaduzejrodziny@ebilet.pl.

There is also a range of tickets dedicated to disabled people. Wheelchair users pays the price of the Category 4 ticket and his guardian enters for free. All interested persons are required to contact to: niepelnosprawni@ebilet.pl.



III. How to get to ERGO ARENA?

ERGO ARENA is located on the border of Gdansk and Sopot, at Plac Dwóch Miast 1 Street. You can quickly and comfortably get to the vicinity of the hall by public transport - definitely the best form of transport during the European Championships. The venue is well connected to the rest of the city. Nearby ERGO ARENA there is a Szybka Kolej Miejska (SKM), bus and tram stops as well.

Access by public transport

SKM Szybka Kolej Miejska

Stop: Sopot Wyciągi (walk by Polna and Łokietka Streets – 15 minutes)

Stop: Gdansk Żabianka (walk by Subisława and Rybacka Streets – 10 minutes)

TRAMS:

Line 2 – stop Gospody/Pomorska

Line 8 – stop Osiedle Wejhera

Line 6 – stop Osiedle Wejhera

Line 11 – stop Gospody/Pomorska

BUSES:

Line 122 – stop ERGO ARENA

Line n185 – stop Polna (Sopot)

Line 227 – stop Pomorska (Gdansk)

Line 148 – stop Gospody (Gdansk)

Line N6 – stop Żabianka SKM (Gdansk)

Line N12 – stop Gospody (Gdansk)

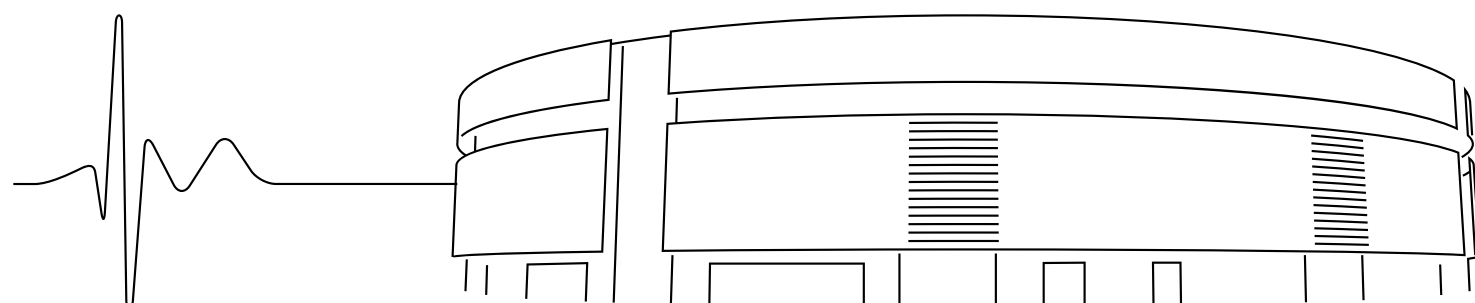
Line N13 – stop Gospody (Gdansk)



Arriving by car and parking

We advise against traveling at matches played in the TAURON Arena Krakow by car. To motorized fans of handball we recommend the public transport. The car can be left on one of the "Park and Ride" parkings in Gdansk.

You can also leave your car by ERGO ARENA, in a paid parking zone. The number of parking places is limited.



IV. PGNiG OBRÓT DETALICZNY OFFICIAL EHF EURO 2016 FAN ZONE

From 15 to 31 January on the Coal Square in Gdansk will grow one of the four "PGNiG retail trade - Official EHF Euro 2016 Fan Zone". It will be opened every day, at 17:00 – 23:00. 15, 17, 20 i 29 January we will start at 15.00. Last day of the championship - 31 January, watching a fight for the medals will start already at 12.00. The Fan Zone is a perfect place to meet with friends and supporting the best handball players in Europe. Gdansk Fan Zone can accommodate about 900 spectators. In addition to the huge large video screen (presented in the following visualization), handball fans will be able to use a special catering area, where there will be served warm and cold meals, drinks and beer. There will be also an entertainment zone with numerous attractions.



Reflex meter of the goalkeeper allows fans to test their reflexes and beat the other team's defenders. A special device measures reflexes and perception, which must be at the highest level if you want to be a handball star.

Bungee run is a real encounter with the defenders. The task of the participant is to reach the finish line as soon as possible. A special rope will disturb him resisting the run and pulling him back - just like a real defender.

Handball 16' is the latest version of dynamic game on the Xbox ONE, where fan becomes a handball player. Participant plays on a big plasma screen and the party gains an extra dimension!

Defeat Szmal, is a Radar Goal in the Official EHF EURO 2016 Fan Zone, where you can beat Sławomir Szmal. All participants face the famous Polish goalkeeper made in real size!

GifBox – in the Official EHF EURO 2016 Fan Zone you can take funny, animated pictures - GIFs. GifBoxes provide lots of fun and joy to all who want to take a picture in a funny pose, with friends or family.

Fan metamorphosis - in the Official EHF EURO 2016 Fan Zone you can make a metamorphosis from your dreams - paint your face in colours of your favourite team!

Children Zones – in the Official EHF EURO 2016 Fan Zone there are also areas for children, where under the guidance of animators, children will be able to colour comics or use the books of puzzles for children.

"PGNiG Turnover Retail - Official EHF EURO 2016 Fan Zone" is a guarantee of a great fun. With roofed construction – in rain or shine.

The entrance to the fan zone is free.



V. SECURITY

Comfort and safety of all fans is a priority for the organizers of the EHF Euro 2016. Therefore, during the tournament there are several simple rules that everyone must adhere to. The most important of them is the meticulousness. Therefore, absolutely remember about about tickets and documents. Without a ticket you will not enter the game. Information services, stewards, and security staff are responsible for security during the tournament in the halls and in the Fan Zones. All of them need to scrupulously carry out their tasks and responsibilities. With this attitude, we will be sure that security of all of us is properly provided in the course of the championship.

Before entering the hall, staff is entitled to carry both personal control and check your luggage. In this context it is very important so that you read the list of prohibited items. The rules of mass event are available on the website www.zprp.pl.

List of prohibited items

1. Weapons, explosives, knives
2. Pyrotechnic materials
3. Bottles, cups, cans, jugs
4. Alcohol, drugs
5. Propaganda materials about racism, xenophobia, vulgarism, religion and politics
6. Flagpoles or bannerpoles of length more than 1 m and diameter longer than 1 m
7. Advertising and promotion materials
8. Gas in aerosol, corrosive and flammable substances
9. Professional cameras and video cameras
10. Helmets, umbrellas, strollers
11. Large and bulky items like bags and suitcases with dimensions exceeding 25 cm x 25 cm x 25 cm
12. Large quantities of paper, streamers
13. Megaphones, whistles, trumpets, vuvuzelas
14. Laser pointers
15. Sport balls, beach balls, balloons
16. Drones
17. Banners or flags of a size bigger than 2 m x 1.5 m
18. Animals
19. Balaclavas, masks

This list is not a closed one. Information and security services have right to individually determine whether an object can be a threat during the match and thus its contribution may not allowed.

Can I bring my camera or video camera to the hall?

Only amateur equipment is allowed. Equipment with interchangeable lens longer than 10 cm is considered to be professional one. Potential refusal decision is made each time by stewards.

Captured images and recorded fragments of matches can be used by the fans for private purposes only.

Can I come to the hall with my luggage?

All objects of a size bigger than 25 cm x 25 cm x 25 cm are prohibited, with particular emphasis on bags, backpacks and suitcases. We strongly advise against taking similar objects into the hall, even if they are within the permissible norm.

Close to the hall there will be organized payable deposit point where you can leave items that are not allowed to be brought with you to the match. Of course, items left in the deposit point can't be dangerous or prohibited by law.

What documents should I bring?

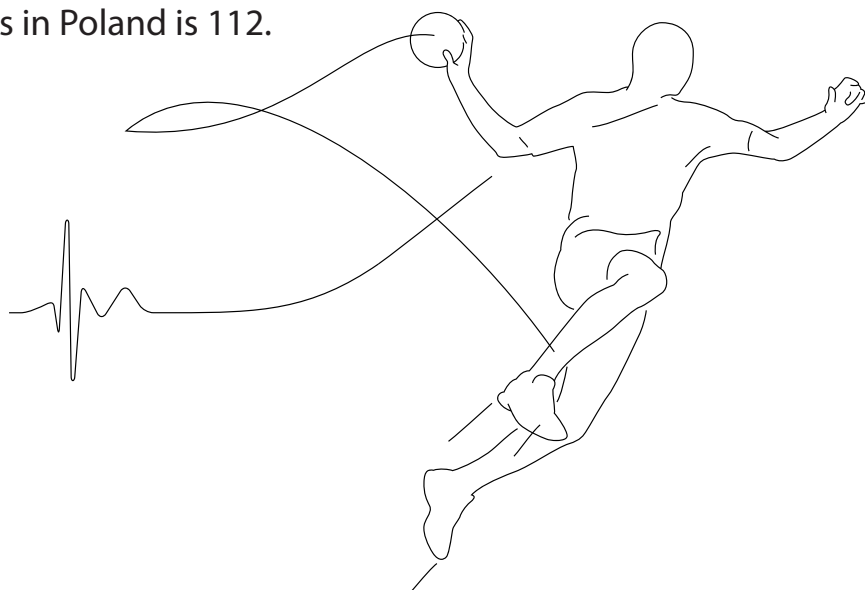
The base is of course your ticket for the match. All spectators, including children, should carry a valid identity document, for example an ID, passport, driving license, student ID or school ID, etc. Information and security services have right to request an identity document in connection with a mass event.

Medical assistance

Free medical assistance is available both in the hall and in the Fan Zone at the point with qualified medical staff and paramedics. In other cases, getting medical assistance is available in clinics. Medical services in these objects are payable.

In life-threatening situations inform the nearest person from personnel in the hall or in the fan zone.

The number for emergency services in Poland is 112.



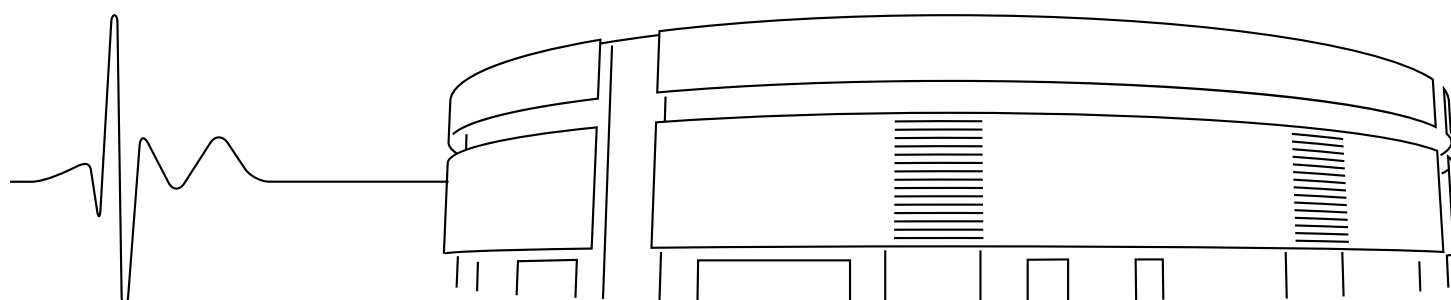
Volunteers

There are 850 well trained volunteers ready on the arrival of handball fans. Very often, these people dressed in a black jacket with the logo of the championships and blue blouses and t-shirts will be the first source of information for you. Volunteers can be found both in the halls and in the Fan Zones. All volunteers are very familiar with the topography of the city, tournament schedule and are able to provide basic first aid.



Smoking

Smoking is strictly prohibited in the ERGO ARENA. The use of electronic cigarettes is also forbidden. There are special areas in the near of gates number A1, B3 and D3, where smoking is allowed.



VI. INFORMATION FOR TOURISTS

GDANSK



There is no Gdańsk without freedom. The most appreciated virtue of the Gdańsk inhabitants shaped the unique 'genius loci' of the city. It is felt among the tenement houses of the Old Town and among the shipyard hoists, on beautiful sandy beaches ... Freedom inspires and transforms both space and people.

Gdańsk was at the heart of events which changed the course of history. In August 1980 it saw a strike in the Gdansk Shipyard, led by Lech Wałęsa, and the establishment of Solidarity ("Solidarność"), a great social movement that captured the imagination of millions of people. These events were the driving force for the freedom movements all around the world and let people believe that the 'impossible' was possible.

Gdańsk today is a modern European metropolis, a knowledge- based economy, a dynamically developing centre of culture, science, entertainment and sport as well as attractive tourist destination and the world capital of amber. The massive brick bulk of St Mary's Basilica towering over the city, Long Market - one of the most beautiful Europe's markets, the statue of Neptune, the old Medieval Crane dozing on the banks of Motława River and the Amber Stadium - are the most popular symbols of Gdańsk. This thousand-year old city located on the Baltic coast has been the hometown of Hevelius, Fahrenheit, Schopenhauer, Grass, and Wałęsa what makes it one of the top tourist attractions of Poland.

MUST SEE

- Fountain of Neptune standing since 1633 in front of the Artus Court is a symbol of Gdańsk
- The Crane – perfectly preserved since 1444 the largest port crane of medieval Europe, today one of the branches of National Maritime Museum
- St Mary's Church – the basilica called „the crown of the city of Gdańsk”, the largest brick Gothic church in Europe
- Hewelianum Centre - a modern science centre
- European Solidarity Centre
- Shakespeare Theatre
- Westerplatte the symbol of the outbreak of World War II

Important phone numbers

Polish country code: + 48

Gdansk code: (58)

Police: 997

Fire brigade: 998

Ambulance: 999

Municipal police: 986

The emergency number for mobile phones: 112

Tourist Hotline of the Polish Tourist Organization:

tel. : +48 22 278 77 77 or +48 801 888 844

cc@pot.gov.pl

Tourist information: Tourist Service Centre

ul. Długi Targ 28/29

tel.: (+48 58) 301 43 55

Gdansk Lech Wałęsa Airport

ul. Juliusza Słowackiego 200

tel.: +48 52 567 35 31

Pomerian Tourist Information Centre

Brama Wyzynna

Targ Węglowy

tel.: +48 58 732 70 41

Main Railway Station Gdansk Główny

Podwale Grodzkie 1

Informacja: 19 - 757

Taxi:

Neptun Taxi 19686

AS Taxi 19660

Hallo Taxi 19666

Embassies and consulates in Poland

List of embassies and consular offices of the Republic of Poland with addresses and phone numbers is available on the website of the Ministry of Foreign Affairs, at: http://www.msz.gov.pl/pl/ministerstwo/protokol_dyplomatyczny/misje_dyplomatyczne_i_urzedy_konsularne_w_polsce/przedstawicielstwa_dyplomatyczne

Telephone number of the Ministry of Foreign Affairs is: +48 22 523 90 00

VII. Glossary English - Polish

Good morning / Dzień dobry

Thank you / Dziękuję

What time is it / Która godzina

Where is the nearest bus stop / Gdzie jest najbliższy przystanek

Handball / Piłka ręczna

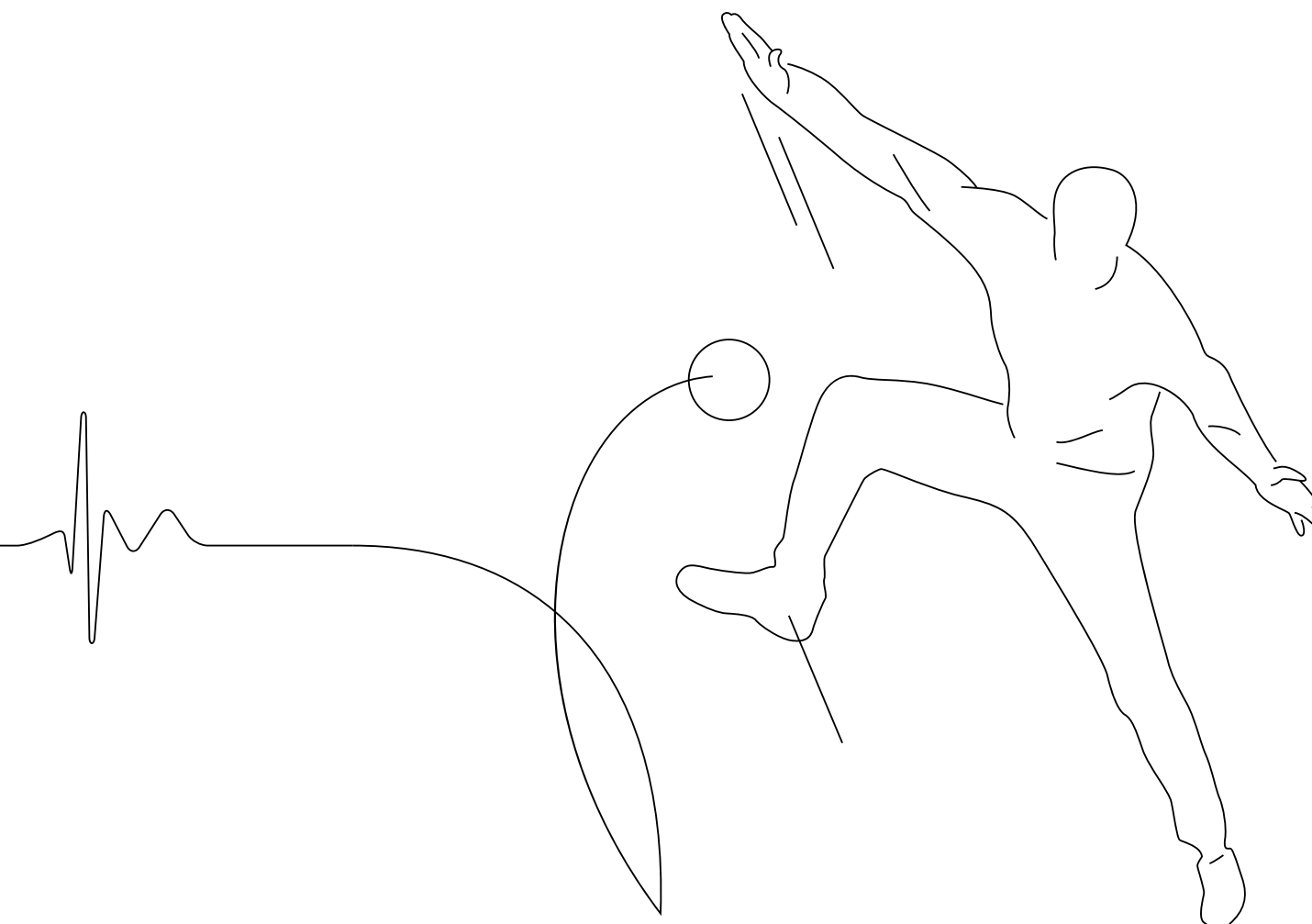
Victory / Zwycięstwo

Enjoy your meal / Smacznego

Dumplings / Pierogi

I love you / Kocham Cię

See you soon / Do zobaczenia wkrótce



OFICJALNI SPONSORZY



PARTNERZY EHF



NARODOWI DOSTAWCY



MIASTA GOSPODARZE



www.ehf-euro.com